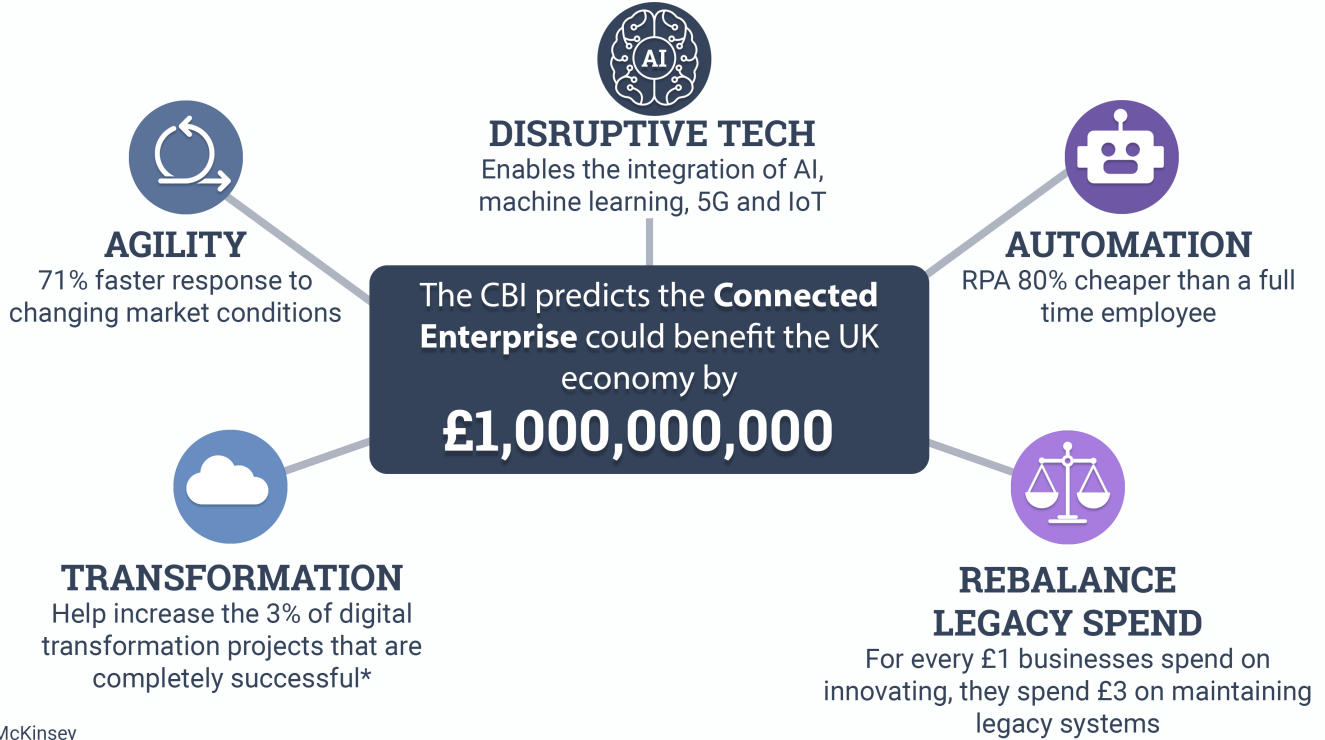


Unlocking the Potential of the Connected Enterprise



Organizations are failing to realize the potential of the connected enterprise due to:

1. SILOED APPROACH
51% of businesses do not share dashboards beyond the IT department, giving a fragmented view of operations.

2. LEGACY SYSTEMS
Legacy IT means it's difficult to integrate with new disruptive technologies.

3. TOOL SPRAWL
80% of businesses use 2-5 monitoring tools, leading to duplication of effort, unnecessary costs and rigid operations.

*State of the IT Nation, Opsview 2019.

To fully realize their digital potential, and transform into a connected enterprise, organizations' digital strategy must be underpinned by a single-pane-of-glass to:



Gain better visibility into legacy systems, allowing easier integration for more modern processes



Automate: Free up staff, enabling CIOs to focus on more strategic and high value activities



Get a full view of system health, preventing outages and downtime - which protects reputation and the balance sheet